

Z-SERIES CONTROLLER™

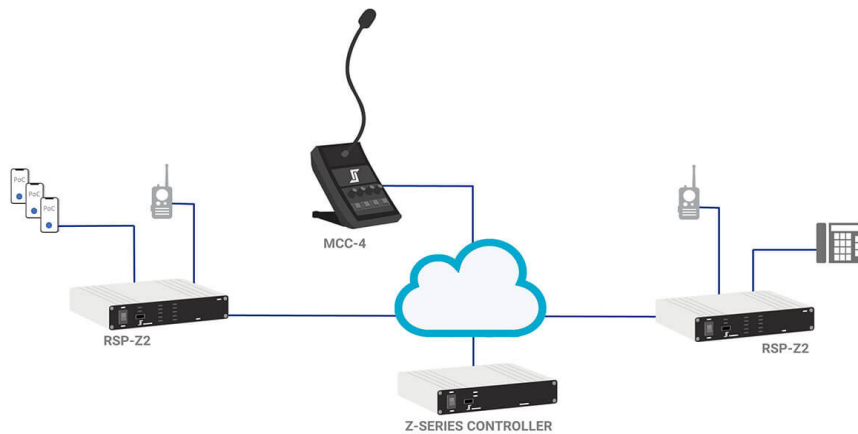
SCALABLE INTEROPERABILITY SOLUTION



OVERVIEW

From a simple audio hub to a scalable and robust interoperability system manager, the Z-Series Controller provides the framework for tightly integrated wide area communications solutions. The Z-Series Controller needs only a single IP address and is easy to set up and manage from any modern browser, including on a smartphone. Up to 80 (24 on a standard system) IP-based JPS RoIP, JPS Bridge, MCC Console, RTP, or SIP resources may be configured on one Z-Series Controller. Patching in audio from other JPS products such as the NXU®-2B is uncomplicated.

When used together, the Z-Series Controller and the RSP-Z2 can form a powerful wide area system. JPS Talkpaths are automatically created between the RSP-Z2(s) and the Z-Series Controller as needed, providing clean, on-demand audio routing and connectivity. This allows the user to see, configure, and use RSP-Z2 resources just like local Z-Series Controller resources.



AUDIO PATCHING

Local Z-Series Controller resources and wide-area-connected RSP-Z2 resources can be put in nets (bi-directional audio patches) and Monitor or Broadcast groups (uni-directional audio patches). Net and Dispatch audio may be streamed to standard RTP or SIP recorder devices or services.

VERSATILE DISPATCH

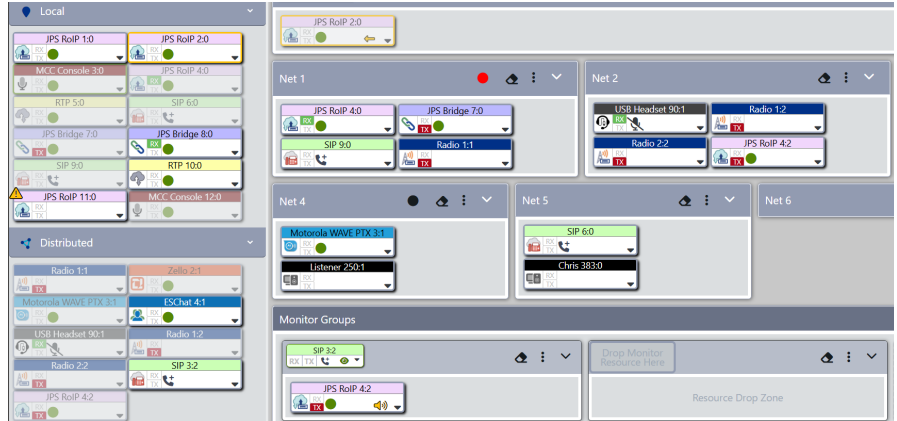
Multi-user light Dispatch delivers a versatile solution when a full dispatch console is not required. A user with dispatch capabilities can use any available resource to dispatch from, and they can participate in one-way (listening) or two-way (listening and speaking) communications with resources in the dispatch area. The Dispatch area can be minimized when not in use.

KEY BENEFITS

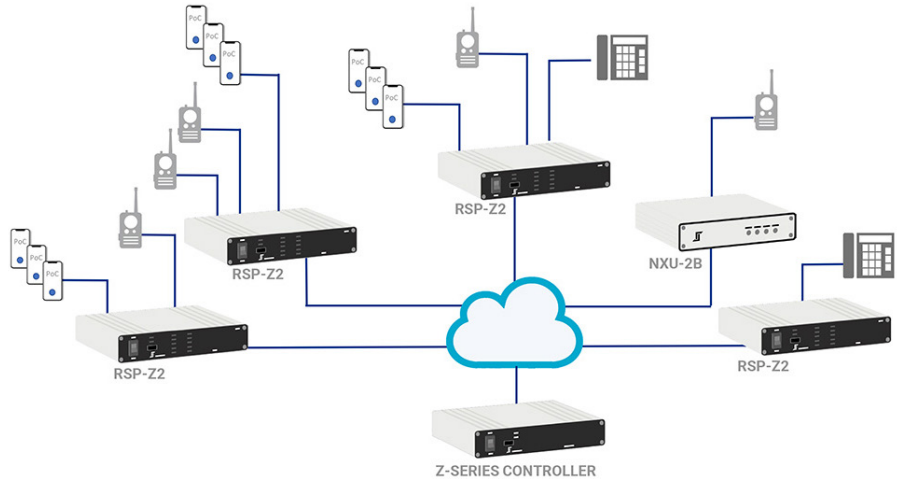
- + Up to 80 local resources
- + Tight integration with RSP-Z2 to integrate resources and manage wide area systems
- + Automatic JPS Talkpaths for hub or distributed audio routing with RSP-Z2s
- + One- or two-way multi-user light Dispatch
- + Distinct Monitor and Broadcast groups for one-way patching
- + Simplified streaming to RTP- or SIP-based recorder
- + Encryption optionally available for JPS RoIP/Bridge/MCC mic audio, and JPS Talkpaths
- + Single Ethernet port and IP address; configurable NTP
- + Extensive USB wired and wireless headset compatibility
- + Backup and Restore configuration for simplified maintenance
- + SIP resource-level, system-level, and registrar settings

APPLICATIONS

Access the Z-Series Controller UI from any modern browser on a computer, smartphone, or tablet. Use drag-and-drop to manage all resources, moving them into and out of nets, Dispatch, and Monitor or Broadcast groups. Select a recorder resource from the dropdown to direct net or Dispatch audio to an RTP or SIP recorder.



Benefitting from the tight integration between these systems, remote resources on managed RSP-Z2s may be configured directly from the Z-Series Controller UI. JPS Talkpaths link audio across the systems, may be encrypted, and support the configurable routing policy.



SPECIFICATIONS

Size and Weight

1.5"H x 7.75"W x 6.5"D (38 x 200 x 165 mm); 2.0 lbs (0.9 kg)

Input Power

+11 to +15 VDC at 1.5A max. 12 VDC power supply provided (100-240 VAC)

Audio Vcoders

GSM (13 Kbps), G.711 A-law (64 Kbps), G.711 μ law (64 Kbps), Opus (~6K Kbps, ~10 Kbps, ~12 Kbps)

Network Interface

10/100BASE-T Ethernet, 10 or 100 Mbps; RJ-45 Connector

